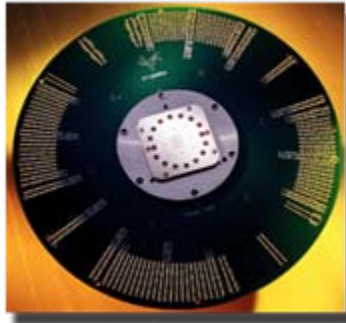


ellipsiz



Results Presentation

FY07 – Financial Year Ended 30 Jun 07

23rd August 2007

This presentation and the following discussion may contain forward looking statements by Ellipsiz Ltd. ("Ellipsiz") relating to financial trends for future periods.

Some of the statements contained in this presentation or arising from this discussion which are not of historical facts are statements of future expectations with respect to financial conditions, results of operations and businesses, and related plans and objectives. Such forward looking statements are based on Ellipsiz's current views and assumptions including, but not limited to, prevailing economic and market conditions and currently available information. These statements involve known and unknown risks and uncertainties that could cause actual results, performance or achievements to differ materially from those in the forward looking statements. Such statements are not, and should not be construed, as a representation (express or implied) as to future performance or achievements of Ellipsiz. In particular, such statements should not be regarded as a forecast or projection of future performance of Ellipsiz and must not be relied upon for any particular purpose whatsoever. It should be noted that the actual performance or achievements of Ellipsiz may vary significantly from such statements.

5.45pm

FY07 Results

Chairman and CEO

Xavier Chong

6.00pm

Financial highlights

CFO, Lim May Lan (Ms)

6.25pm

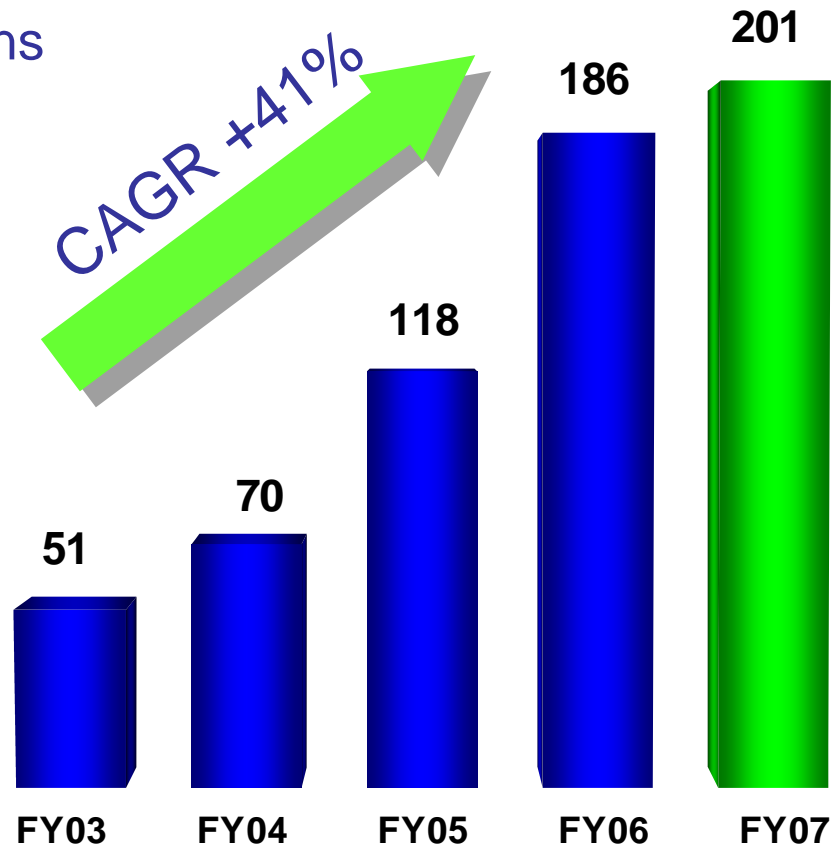
Q&A

FY07 Results

Xavier Chong
Chairman and CEO

Record revenue of \$201m (+8% yoy)

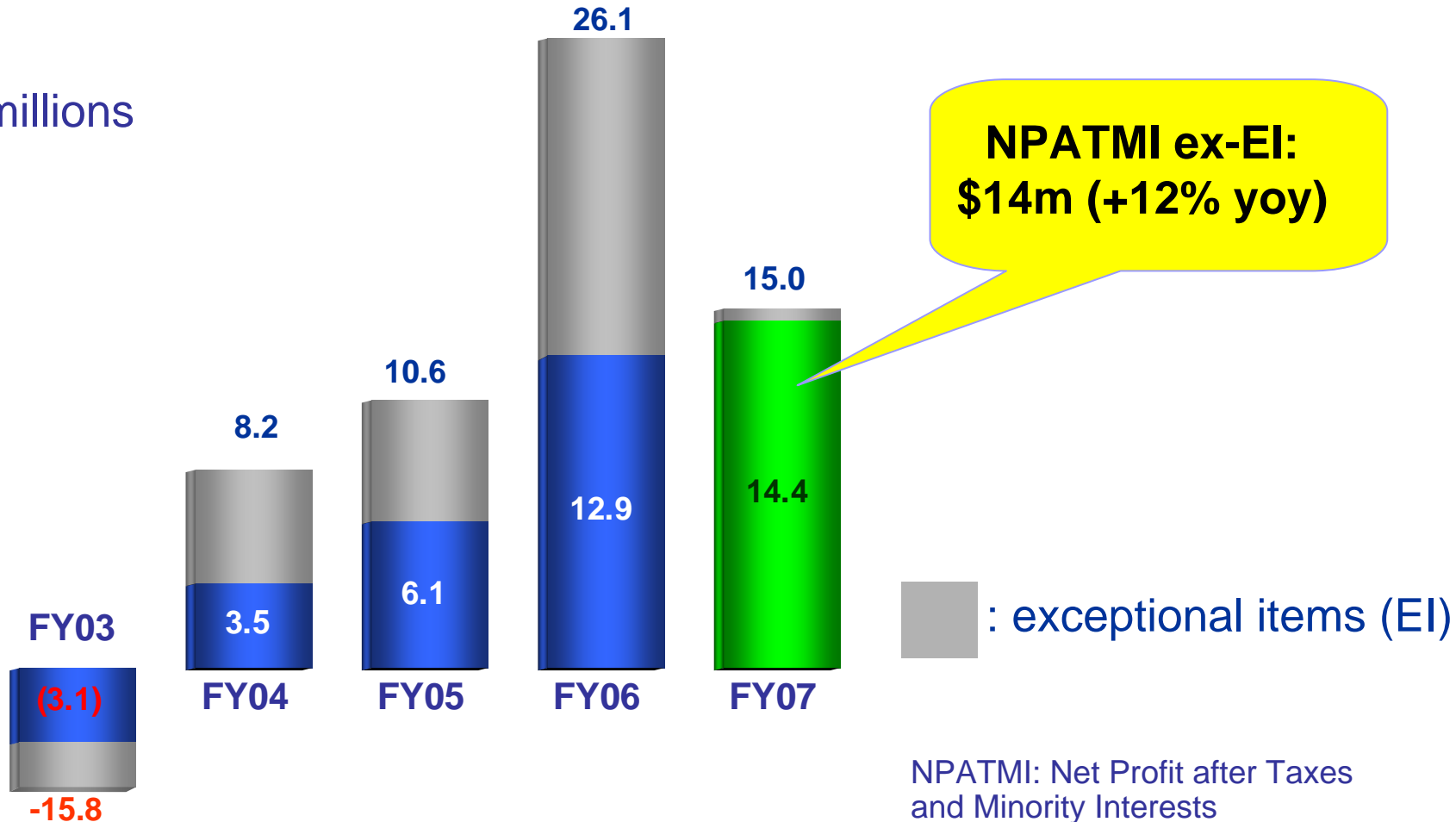
\$ millions



Financial Year Ended 30 June

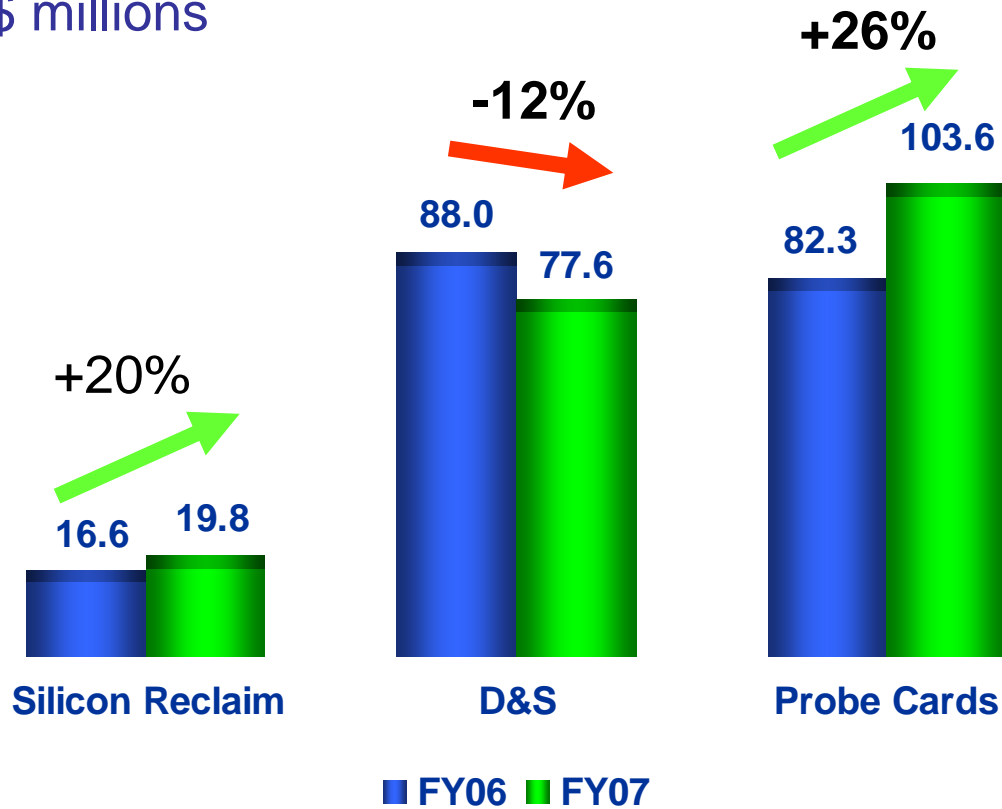
NPATMI of \$15m (-42% yoy)

\$ millions

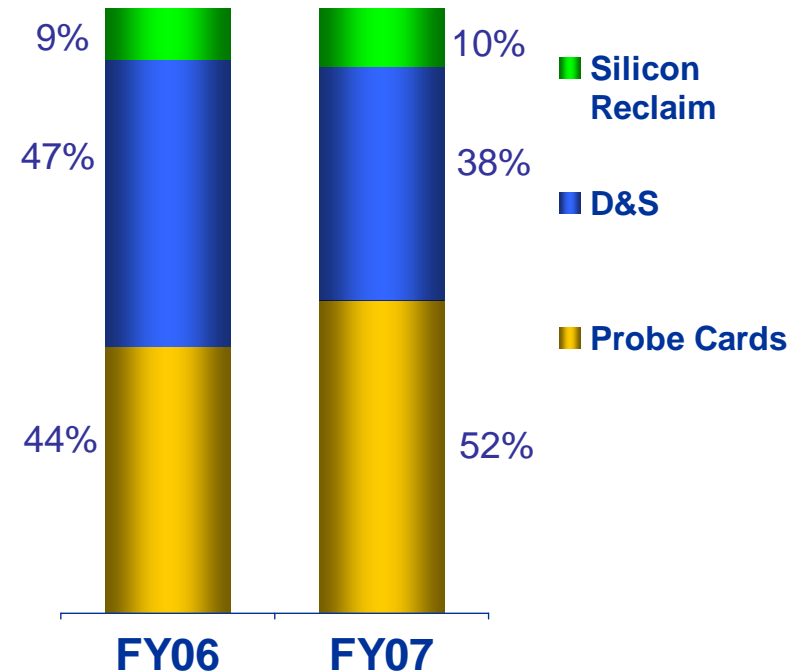


Revenue by Segments

\$ millions

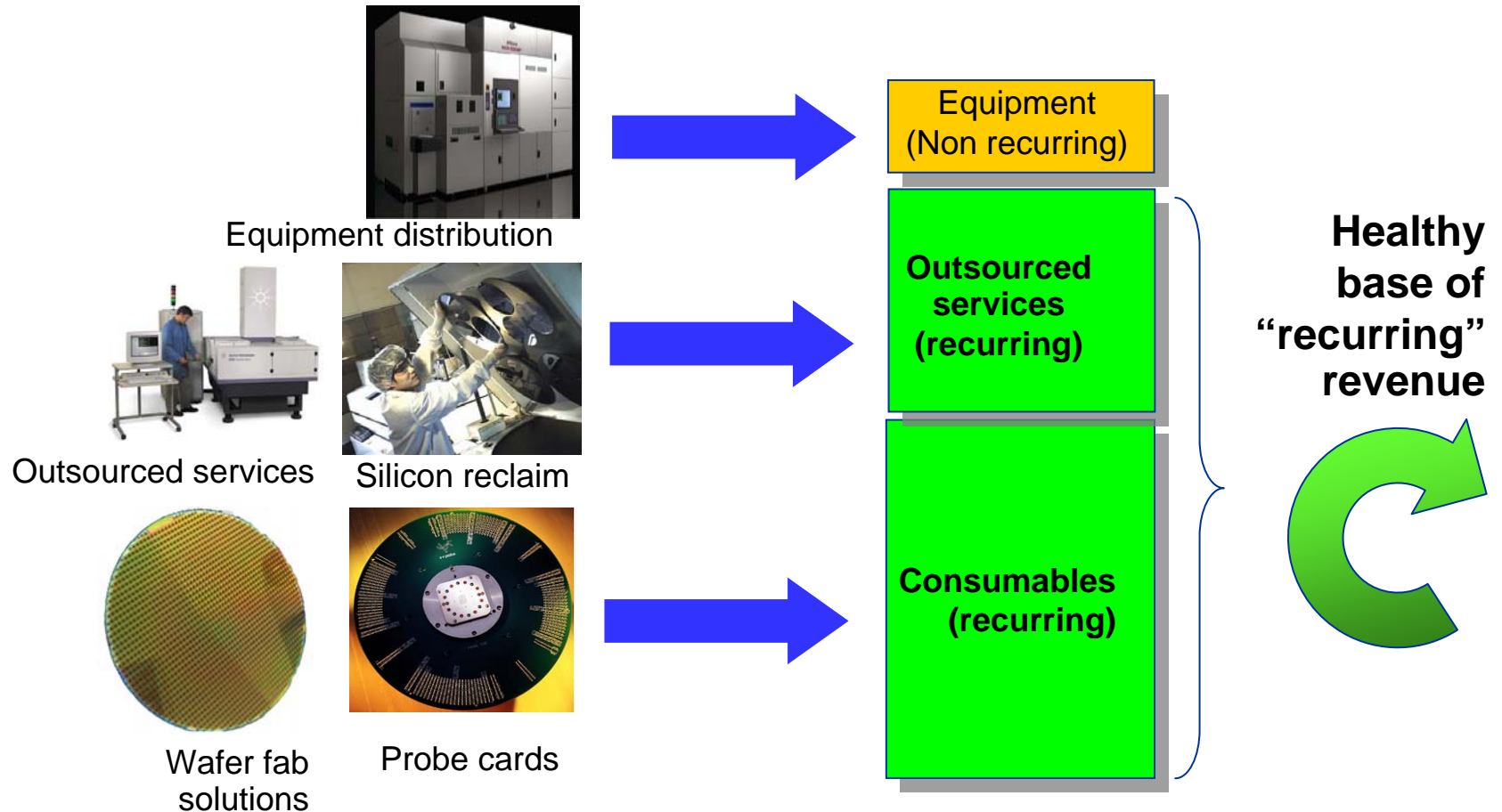


Revenue Mix

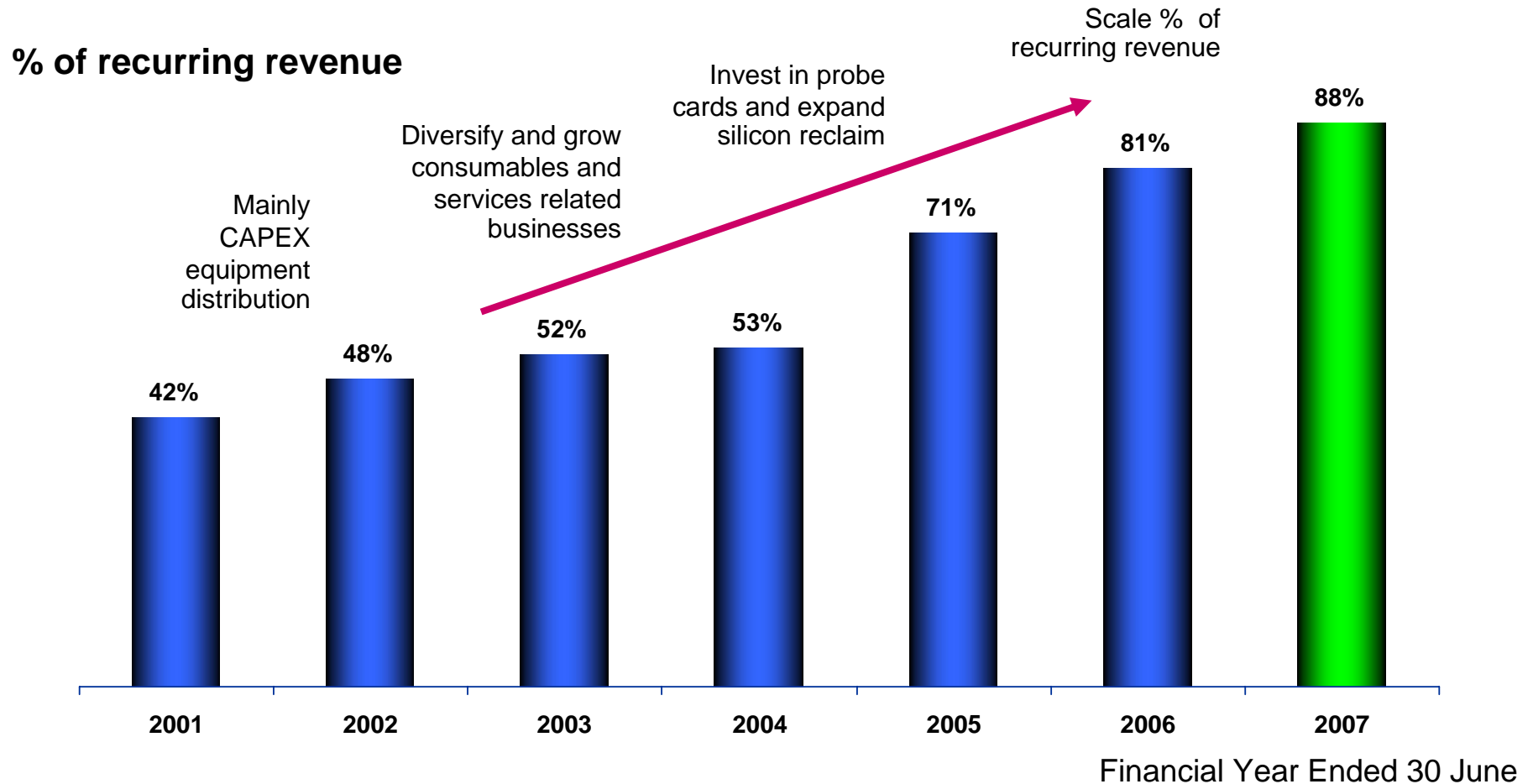


D&S: Distribution and Services
Financial Year Ended 30 June

Building niche businesses that provides healthy base of recurring revenue for stability and growth



Maintaining healthy base of recurring revenue



- SV Probe ranked world's 4th largest probe card company by VLSI (Jun 07).
- Silicon reclaim plant expanded capacity by 50% from 100k wpm to 150k wpm in Jan 07.
- Set up JV E+HPS to target niche facility and infrastructure market in Asia (e.g. Cleanroom for wafer fab and assembly & test houses).
- Board Chairman change: Matthew Chan stepped down as Non-executive Chairman, Xavier Chong appointed Chairman.
- Strategic investment via equity stake in Kita Mfg (precision pin specialist based in Japan).

Probe Cards

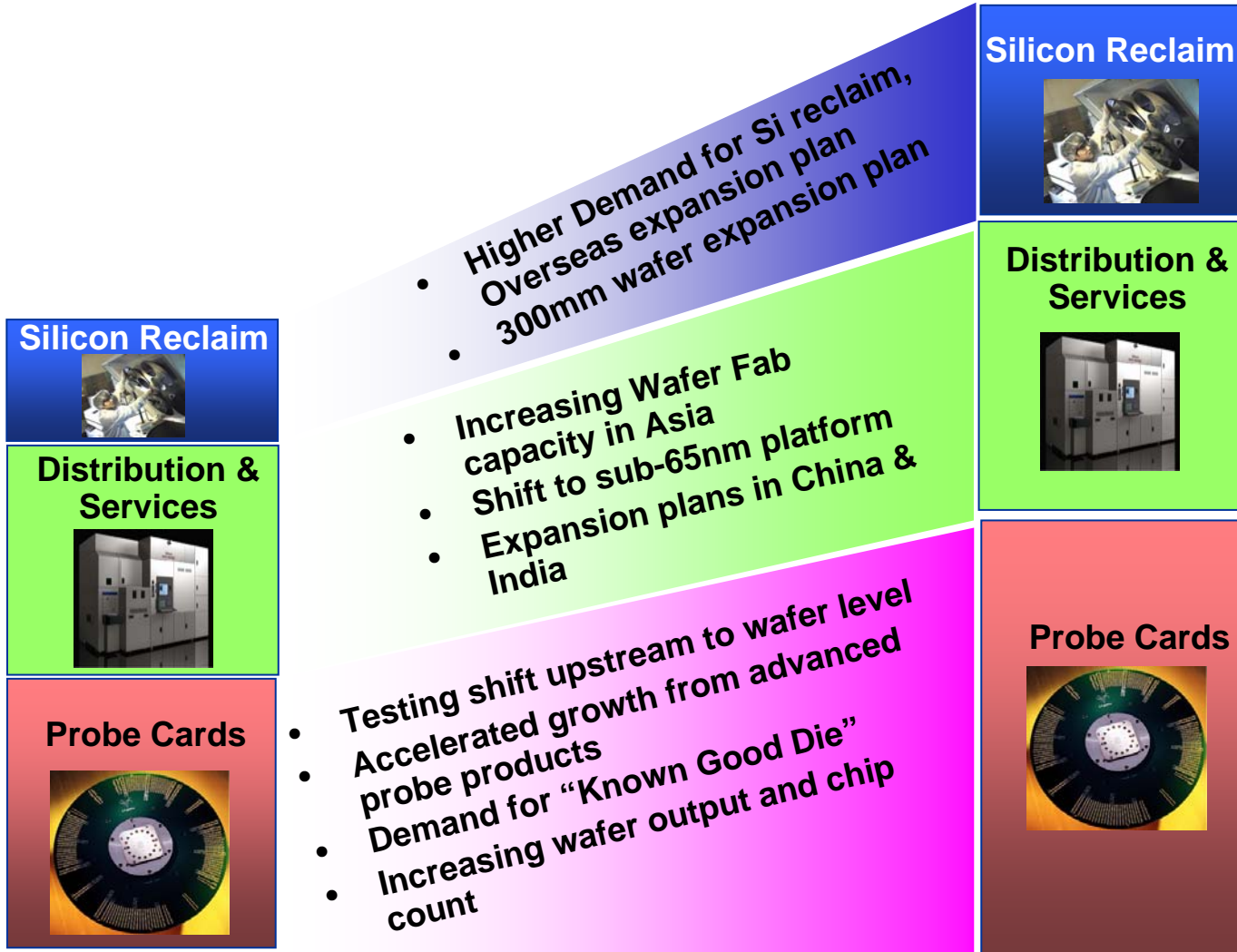
- Completed integration of the acquired K&S wafer test assets.
- New Vietnam facility target completion in Sep 07, target ramp up by 4QCY07. New facility 4000m² of space, 2x existing plant.
- Advanced probe cards now 36% of total probe card revenue, up from 25% in FY06.
- Total points manufactured grew 77% to 3.9m from 2.2m in FY06. Total quantity of cards built grew 47% to 27k pc from 18k pc in FY06.
- Pushing R&D in Advanced Vertical Technology (AVT), targeted for advanced high parallelism and fine pitch probing.
- Production transfer of Vertical Cards into Vietnam facility underway.

Distribution & Services

- Revenue declined 12% mainly due to non-recurrence of facility and service projects completed in FY06.
- Opportunities for cleanroom facilities projects in China due to growing demand.
- Expanded distribution portfolio with Agilent Technologies to include Test and Measurement products in Singapore, Malaysia and Thailand.

Silicon Reclaim

- Revenue grew 20% to \$20m – mainly driven by increased output from expanded capacity.
- Completed capacity expansion program in Jan 07, capacity now up 50% to 150k wpm compared to FY06.
- Plans to invest in 300mm silicon reclaim facility in Singapore



- First six months in CY2007 was faced with challenges from market slow down mainly due to lower demand, pricing pressure and inventory correction issues.
- We remain vigilant and cautious as near term outlook remains mixed.
- Market outlook for 2007:
 - ❖ Global semiconductor market forecast: +1.8% (SIA, Jun 07)
 - ❖ Probe card market: +3% (VLSI, Jun 07)
 - ❖ Wafer fab equipment: +5% (Gartner, Aug 07)
 - ❖ Silicon reclaim: +12.5% (SEMI, Mar 07)
- Global macroeconomic volatility and liquidity concerns pose risks.
- Pricing pressure and demand volatility expected to pose concerns.

Financial Highlights

Lim May Lan
Chief Financial Officer

year-on-year summary

\$ (million)	FY07	FY06	Change
Revenue	200.6	186.0	+8%
Gross Profit	56.9	56.7	+1%
Gross Profit margin	28.3%	30.4%	-2.1 ppt
NPATMI (pre-exceptional items)	14.4	12.9	+12%
NAPTMI pre-exceptional items margin	7.2%	6.9%	+0.3 ppt
NPATMI	15.0	26.1	-42%
NPATMI margin	7.5%	14.0%	- 6.5 ppt
Basic EPS (cts)	5.89	10.56	-44%
Diluted EPS (cts)	5.88	10.52	-44%

Note: FY06 exceptional items (\$13.2m) include mainly divestment gains, negative goodwill from acquisition and impairment loss that arose from fair value adjustment of investment.

Financial Year Ended 30 June

sequential summary

\$ (million)	2H FY07	1H FY 07	Change
Revenue	96.1	104.5	-8%
Gross Profit	22.4	34.5	-35%
Gross Profit margin	23.3%	33.0%	-9.7 ppt
NPATMI (pre-exceptional items)	4.0	10.4	-62%
NAPTMI pre-exceptional items margin	4.2%	10.0%	-5.8 ppt
NPATMI	4.1	10.9	-62%
NPATMI margin	4.3%	10.4%	-6.1 ppt
Basic EPS (cts)	1.62	4.33	-63%
Diluted EPS (cts)	1.62	4.33	-63%

Financial Year Ended 30 June

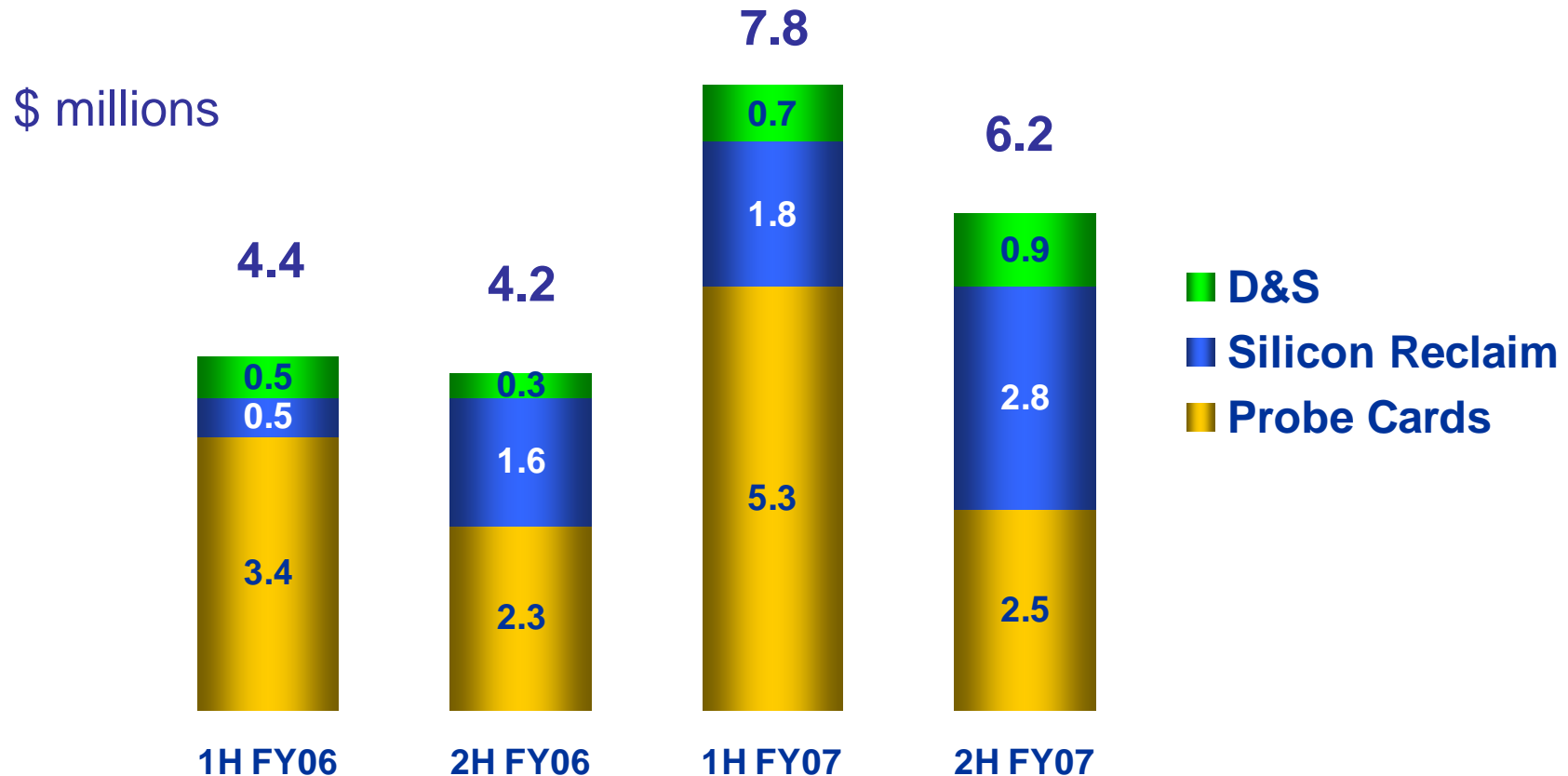
Other financial highlights

For FY ended 30 Jun	FY07	FY 06
Cash and cash equivalent	27.8m	46.4m
NAV per share	48.1cts	44.9cts
Gross Debt/Equity	6.9%	13.6%
Current ratio	2.2x	1.5x
Quick ratio	1.7x	1.2x
Return on Equity (exclude EI)	11.8%	11.5%
Shareholders' equity	122.9m	111.8m

- Current ratio: Current Assets / Current Liabilities
- Quick ratio: (Current Assets – Inventories) / Current Liabilities

Financial Year Ended 30 June

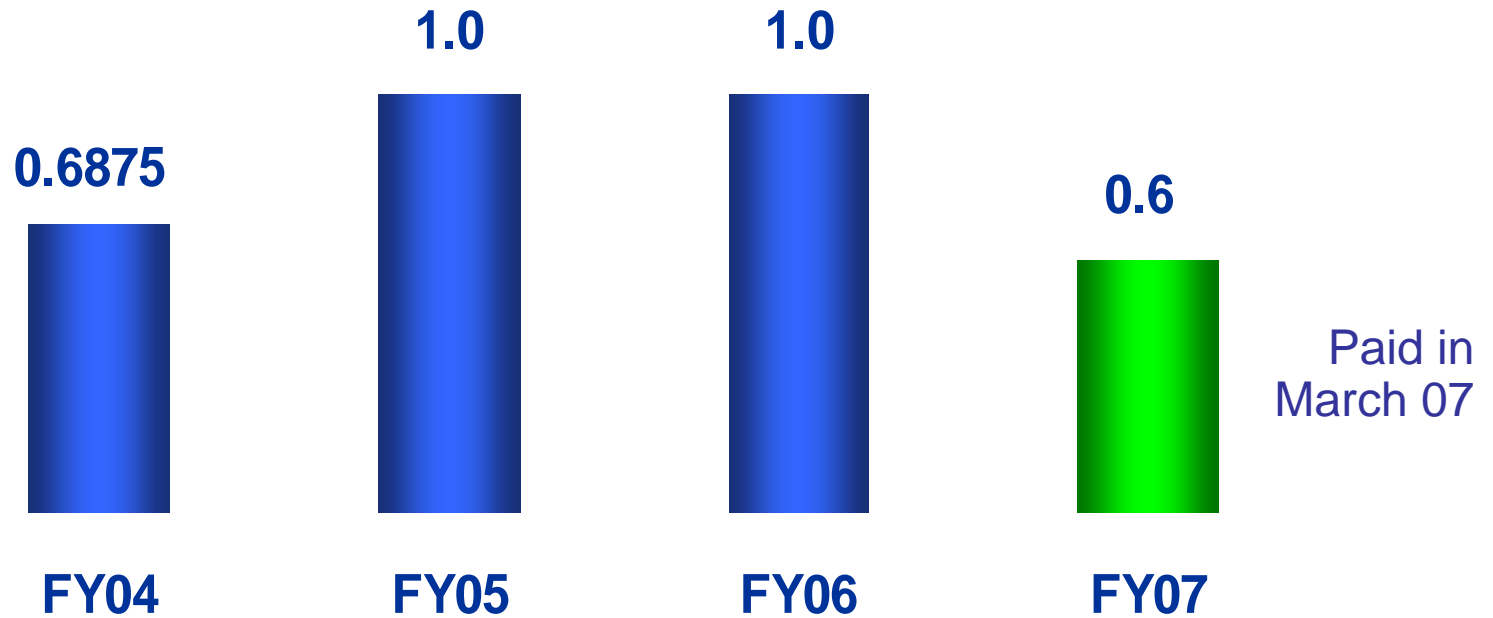
CapEx mainly into Probe Card & Silicon Reclaim Forecast for FY08 and FY09 (24mths) is \$32m



Financial Year Ended 30 June

Total dividend for FY07: 0.6 cents

Cents



Financial Year Ended 30 June

ellipsiz

Q & A