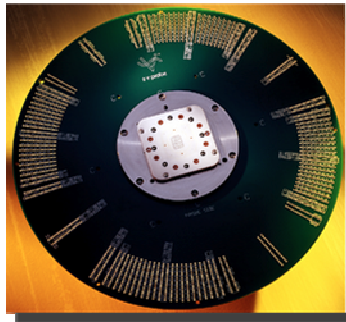


ellipsiz



# **FY2008 Annual General Meeting Presentation to shareholders**

23rd October 2008



# Safe Harbor

---

This presentation and the following discussion may contain forward looking statements by Ellipsiz Ltd. ("Ellipsiz") relating to financial trends for future periods.

Some of the statements contained in this presentation or arising from this discussion which are not of historical facts are statements of future expectations with respect to financial conditions, results of operations and businesses, and related plans and objectives. Such forward looking statements are based on Ellipsiz's current views and assumptions including, but not limited to, prevailing economic and market conditions and currently available information. These statements involve known and unknown risks and uncertainties that could cause actual results, performance or achievements to differ materially from those in the forward looking statements. Such statements are not, and should not be construed, as a representation (express or implied) as to future performance or achievements of Ellipsiz. In particular, such statements should not be regarded as a forecast or projection of future performance of Ellipsiz and must not be relied upon for any particular purpose whatsoever. It should be noted that the actual performance or achievements of Ellipsiz may vary significantly from such statements.

# ellipsiz FY08 key financial highlights

- **Revenue** declined 2% year-on-year to **\$197m**  
*(FY07 \$201m)*
- Incurred **net loss after tax and MI** of **\$12.3m**  
*(FY07 net profit of \$15.0m)*
- **Excluding EI**, net loss after tax and MI was **\$2.9m**  
*(FY07 net profit \$14.4m)*
- **EI** from rationalisation of SV Probe's Europe & US operations amounted to **\$9.4m**
- Net cash from operations > **\$8m**

# 5 year growth trend

Revenue (S\$m)

250

**FY04 – FY08 CAGR: 23%**

200

150

100

50

0



**FY04**



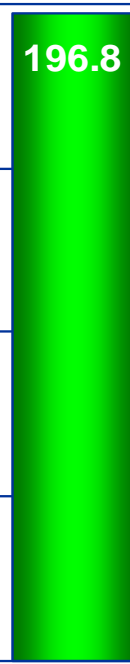
**FY05**



**FY06**



**FY07**



**FY08**

### Distribution & Services Solutions (DSS)

Nikon Steppers



Fab Consumables



Fab Facilities

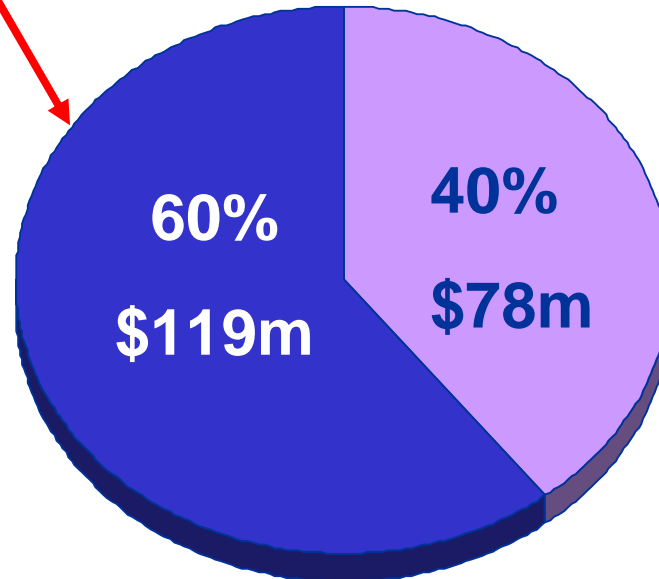


PCBA Test and Inspection

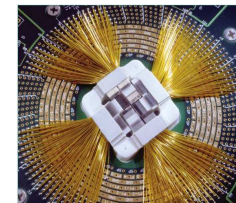
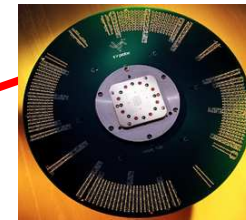


Silicon Reclaim

FY2008 revenue: S\$197m



### Probe Card Solutions (PCS)





## Key events

---

- **Sep 2007** – formed JV through Testel Solutions to penetrate assembly & test equipment & outsourcing markets in SE Asia & China.
- **Oct 2007** – Widened presence in Thailand through INETest Resources Thailand & IRC Technologies.
- **Oct 2007** – Incorporated subsidiaries in Australia & New Zealand.
- **Nov 2007** – Dr Foo See Liang rejoined the Board as Independent & Non-Exec Director.
- **Nov 2007** - SV Probe opened new factory in Binh Duong Province, Vietnam.
- **Jan 2008** – Mr Melvin Chan appointed as new CEO of Ellipsiz. Mr Xavier Chong remained as Executive Chairman, focusing on strategic business growth & corporate development of Ellipsiz.
- **Mar 2008** – Probe card industry veteran Mr Sergio Perez appointed as Senior VP for Business Development of SV Probe.
- **Jul 2008** – SV Probe introduced 2 new solutions (1) SureTouch™, a one touch full wafer probe solutions for NAND; and (2) LogicTouch, a MEMS-based fine pitch vertical probe solution for advanced mixed signal & logic devices.



## Proposed rights issue

- 6 Rights Shares with 1 free detachable warrant for every 5 existing ordinary shares.
- Price: S\$0.035 per Rights Share
- No. of Rights Shares: up to 307,200,862
- No. of free detachable warrants: up to 51,200,143
- Each warrant carries the right to subscribe for 1 new ordinary share at an exercise price of S\$0.035.
- Net proceeds : up to S\$10.5m
- Use of proceeds : S\$6.8m for probe cards business, S\$3.7m for DSS & repayment of loans.
- Approval-in-principle obtained from SGX on 22 October 2008
- Notice of EGM and circular to shareholders will be issued in due course.

ellipsiz



Thank you!